

**ONVIF**

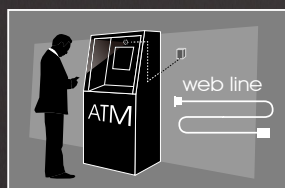


Only Small Cam Do.  
**UNICam**



**GV-UNP2500**  
**GV-UNFE2502 / GV-UNFE2503**

- Main unit is detachable from lens
- Two lens options – Pinhole and Fisheye
- Flexible, discreet and covert
- Built-in microphone



Provides discrete and covert surveillance even when space is limited, such as ATMs.

# GV-UNP2500

Only small cam do

# GV-UNFE2502

World's smallest Fisheye

# GV-UNFE2503

World's smallest IR Fisheye



## Key features ONVIF

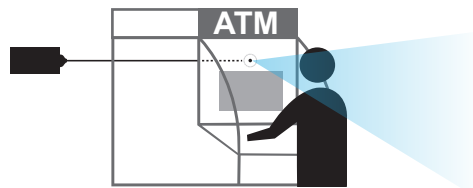
- Discreet and covert design
- 2MP High quality
- H.264 and MJPEG dual streaming
- Super Low Lux
- Wide Dynamic Range
- Built-in Microphone
- Micro SD card slot
- Apps for iPhone,iPad,Android



UNFE2503 only UNFE2502/2503

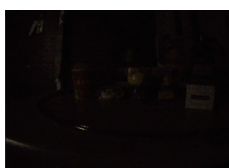
### Discrete and Covert design

The design comprises a main unit and a separate lens unit, enabling it to be mounted up to 10 meters (32.8ft.) apart.

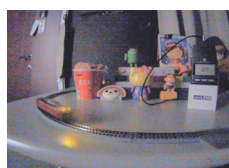


### Super Low Lux

Visible footage in low light environments for reliable surveillance even in the dark.



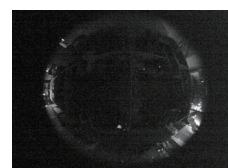
Super Low Lux off



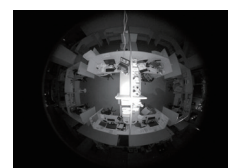
Super Low Lux

### World's smallest IR Fisheye IP Camera

At 1/4 size, it provides equal IR performance and superior low lux capability compared to non-IR Fisheye cameras.



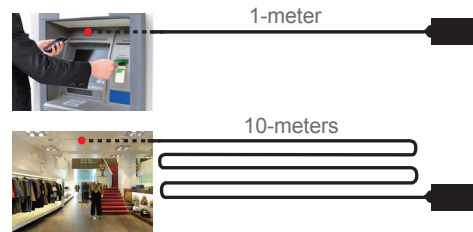
Standard non-IR Fisheye



GV-UNFE2503

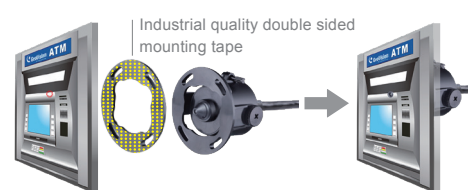
### Long range installation

For flexibility of installation, the camera is designed with a pinhole lens separate from the main unit and connected through a one-meter RJ12 cable. An optional 10-meters RJ12 cable is available for long range installations and can be cut to shorten to the desired length.



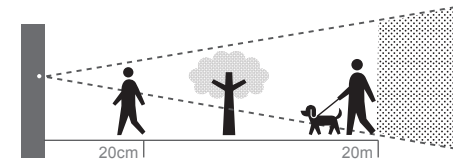
### Easy mounting solution

The Pinhole lens can be easily mounted with the included industrial quality double sided mounting tape. No nails and screws are needed.

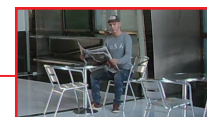


### Depth of 20cm to 20m

The Pinhole lens provides clear images from a depth 20cm to 20m.



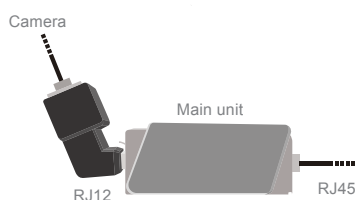
20cm



20m

### 90° vertical RJ12 converter for UNP2500

For installations where space is limited, a 90° vertical RJ12 converter is included to maximize flexibility.



### Detachable IR ring for UNFE2502 / UNFE2503

The IR ring on UNFE2503 can be detached to transform camera into UNFE2502 (model without IR function)

